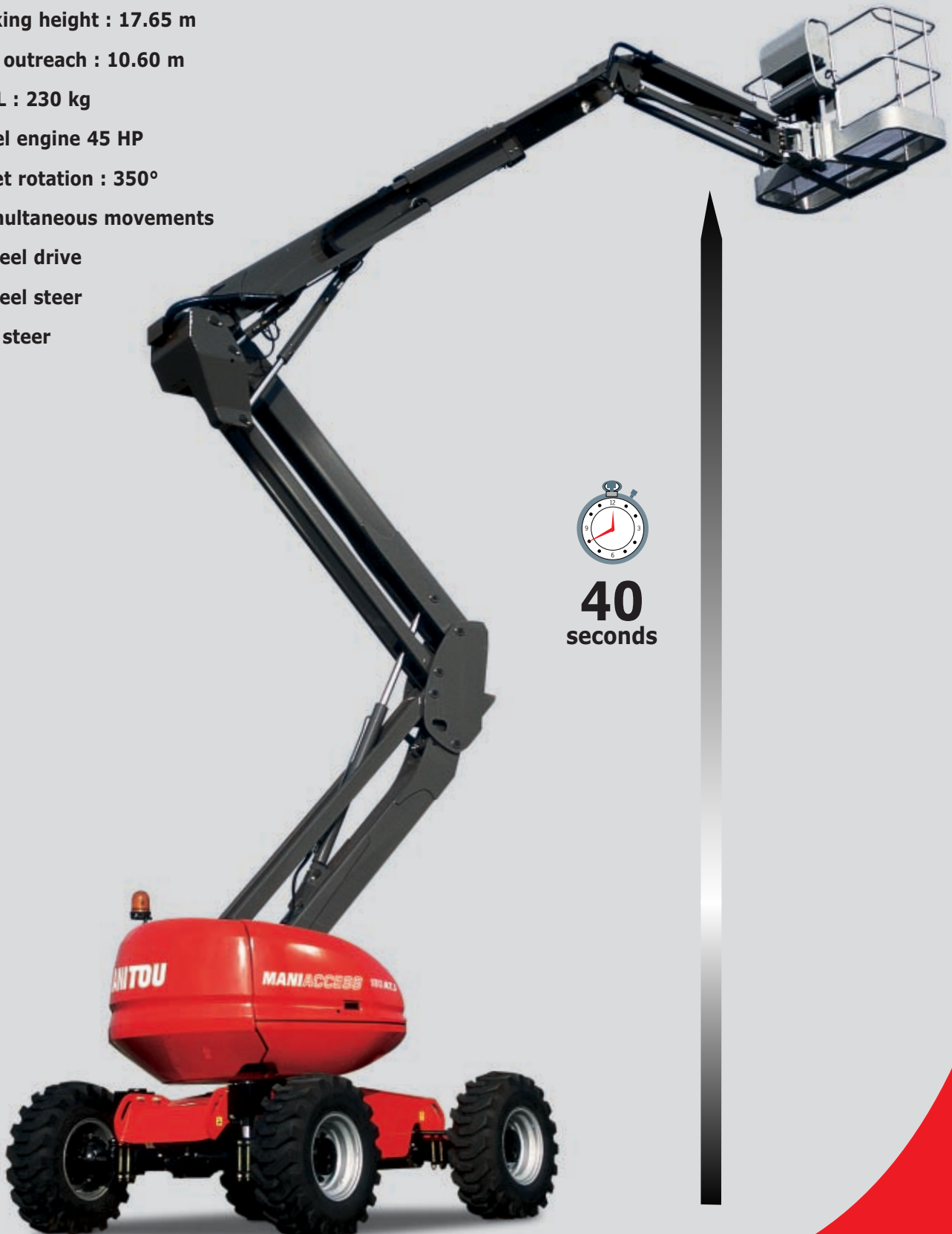


MANIACCESS

■ 180 ATJ

- Working height : 17.65 m
- Max. outreach : 10.60 m
- S.W.L : 230 kg
- Diesel engine 45 HP
- Turret rotation : 350°
- 4 simultaneous movements
- 4 wheel drive
- 4 wheel steer
- Crab steer



180 ATJ

S.W.L.230 kg including 2 people
External use :wind 45 km/h

Working height17.65 m
Platform floor height15.65 m

Max. outreach10.60 m
Up and over clearance7.15 m
Overall length7.77 m
Length (transport position)5.77 m
Overall width2.30 m
Overall height2.37 m
Basket size1.80 m x 0.80 m
Ground clearance42.5 cm
Turning radius ins/outside1.32/3.66 m

Turret rotation350°
Basket rotation180°
Jib movement140°

Engine (Low emission)
PERKINS 404C2245 HP

Maxi. travel speed6 km/h
Lifting time40 s

Gradeability on rough terrain40 %
Max. slope accepted5° or 9%

Hydraulic tank54 l.
Diesel tank52 l.

Tyres12.5 - 18
 4 wheel drive/4 wheel steer/crab steer

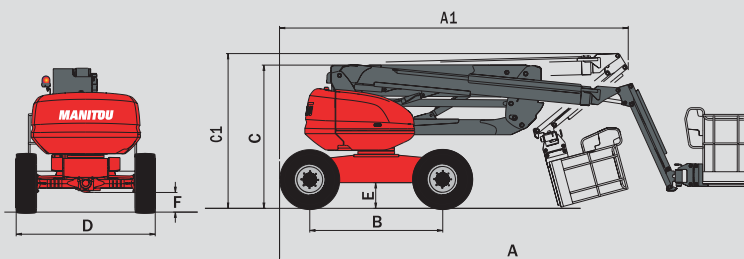
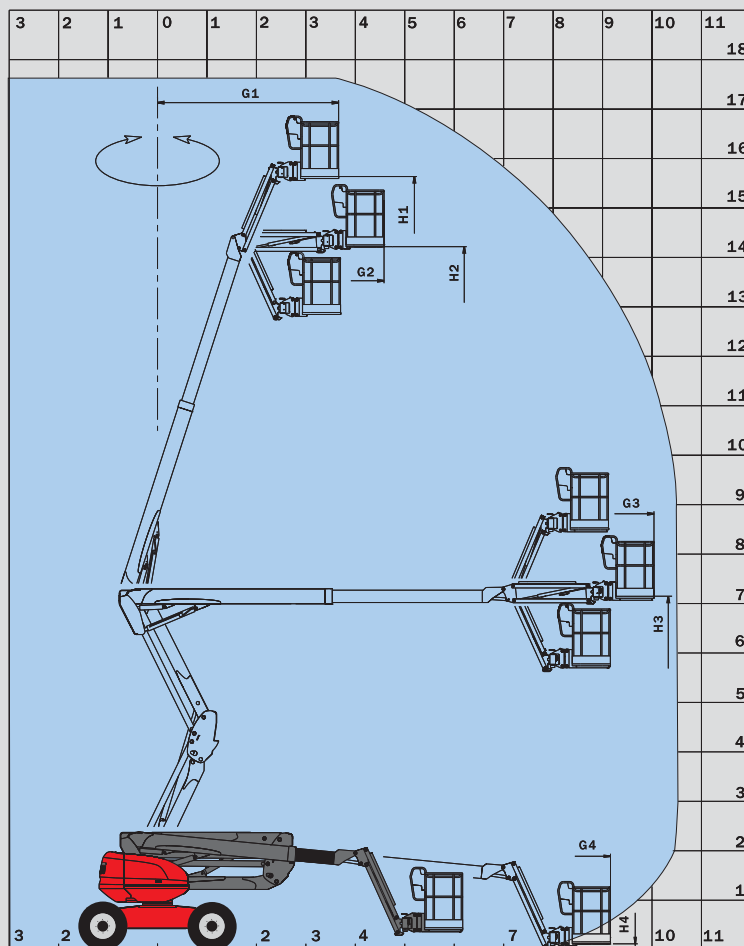
Weight8090 kg

Standard equipment

- Proportional controls
- 4 simultaneous movements
- Foam filled tyres
- Differential lock
- Limited front axle slip
- Diagnostic tools
- Hour meter
- Klaxon
- Rotating beacon
- Slope and overload alarm in the basket
- Overslope unlocking
- Lifting brackets
- Safety electric pump
- 230 V auxiliary power cable

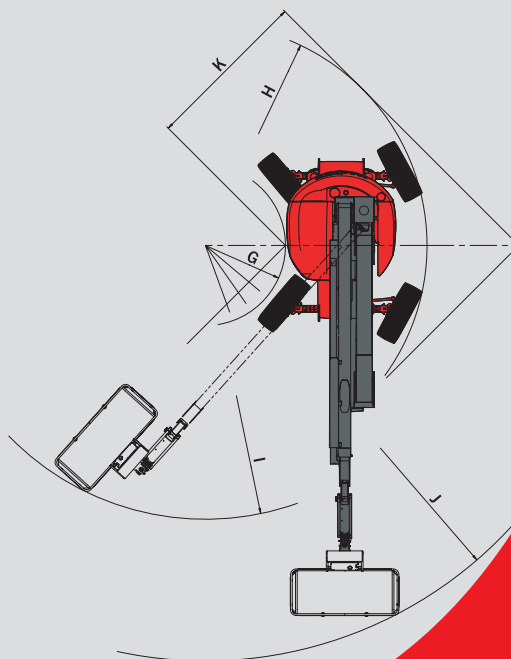
Options

- **Oscillating axle**
- **Continuous rotation**
- **On board generator set**
- Electric plug in platform (230V)
- Air predisposal in the platform
- Water predisposal in the platform
- Working lights
- Customised Painting
- Cold conditions -25°C
- Biodegradable oil
- All motion alarm
- Drive alarm
- Safety harness



A	7775
A1	5770
B	2200
C	2370
C1	2560
D	2300
E	425
F	325
G	1325
G1	3660
G2	4580
G3	10040
G4	9160
H	3665
H1	15700
H2	14250
H3	7150
H4	120
I	4530
J	6875
K	2730

mm



This publication in no way constitutes an offer and the company reserves the right to alter specification without prior notice.
 The MANITOU models presented in this brochure can be supplied complete with optional equipment attachments.



MANITOU BF SA

B.P. 249 - 44158 Ancenis Cedex - France
 Tél. : 33 2 40 09 10 11 / Export Department Fax : 33 2 40 09 10 97
 www.manitou.com

700183EN



MANITOU

MANIACCESS

■ **160 ATJ**
180 ATJ



 **MANITOU**

160 ATJ • 180 ATJ

MANITOU, the world leader in materials handling, has the ability to accompany you on all types of terrain.

The 160 and 180 ATJ models have been developed to respond to all your requirements, offering you better productivity, reliability and safety.



16,25 m (160 ATJ)
17,65 m (180 ATJ)

9,10 m (160 ATJ)
10,60 m (180 ATJ)



Designed to access the most restricted areas

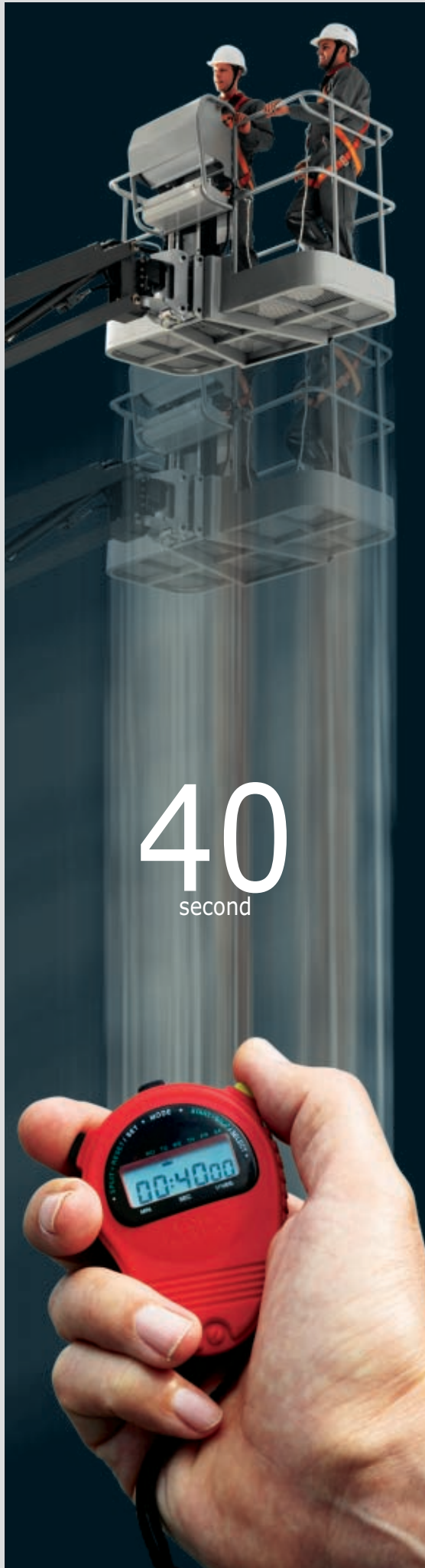
Excellent Outreach

Outstanding outreach offered by both models.



PRODUCTIVITY

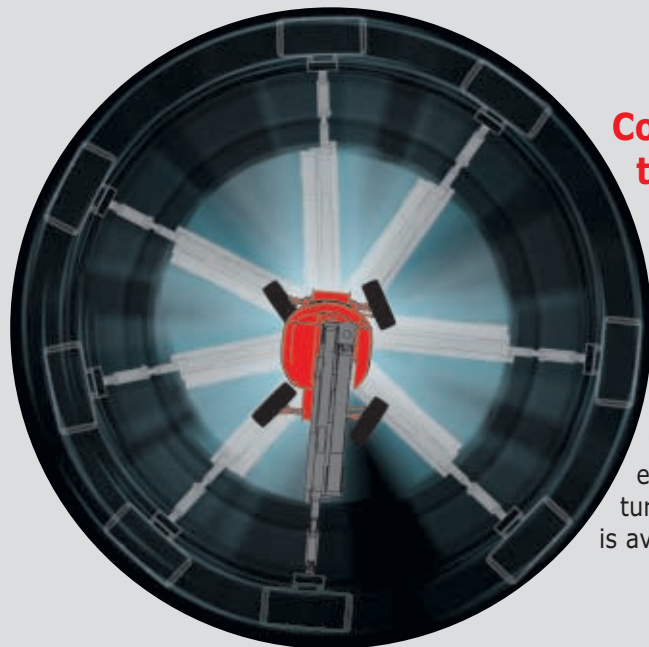
Saving Time



40
second

Elevates to full height in 40 seconds

You can elevate to full height in 40 seconds, due to the proportional controls and 4 simultaneous movements (arms 1, 2, 3 and jib), ultimately saving the operator time.



Continuous turret rotation (optional extra)

In order to save even more time, the optional extra of continuous turret rotation is available.

Speed

Select from three different speeds

To make driving of the machine easier and safer you have three speed options to choose from.

For normal ground conditions choose high speed.

For restricted and congested areas use low speed, this will allow the operator to position the machine safely.

The third speed is a slow torque speed; this is designed to allow the machine to access lorry ramps and cope with rough terrain conditions.



Transport of Machine

For its size and weight, the machine can be easily transported by truck from one site to the other.

Plus the machine can be stowed in its transport position to save even more space.



PRODUCTIVITY

Compact and Manoeuvrable

Three steering options



Four Wheel Steer



Crab Steer



2 Wheel Steer

These different steering options give the operator the opportunity to overcome a large number of obstacles.

2 Wheel Steer is designed to allow the operator to drive in fast speed mode.

4 Wheel Steer offers a tighter turning circle (engine automatically reduces to slow speed for Safety).

The 4 Wheel crab steer position allows the operation to use a different (sideways) approach.



Jib Arm

Whilst travelling in the machine the raised jib will give the operator excellent visibility for a safe driving experience.



In order to pass obstacles, like a doorway, you can position the jib horizontally.



In working mode, the jib arm allows the platform to be positioned overhanging obstacles, increasing access opportunities.



Access all terrains

Excellent rough terrain performance

MANITOU has used all its rough terrain experience and adapted this knowledge to suit the 160 and 180 ATJ models.

The powerful 45hp engine complete with four wheel drive and large 18" tyres enable the 160 and 180 ATJ models to cope with the most arduous types of terrain.

The four wheel drive transmission system makes driving easier by automatically adapting its speed to the changes in terrain and also offers up to 40% gradeability on rough terrain.



Better Ground Clearance

With an impressive 42 cm ground clearance, the 160 and 180 ATJ can overcome most terrains.

Oscillating Axle (optional extra)

If you regard comfort as a priority when travelling across uneven ground, there is the optional extra of an oscillating axle. The oscillating axle will cushion the operator against uneven ground and reduce the sway of the machine when travelling.



PRODUCTIVITY

Reduction in maintenance costs

Can Bus Technology

This innovative technology installed in the base unit of the machine, simplifies the electrical system into only 2 wires, thus reducing the possibilities of breakdowns. This system also allows you to detect problems with the machine.



Assistance integrated diagnostic

There is no longer any need for a technician to intervene with his pocket calibrator. Today, thanks to this technological innovation, the calibrator is integrated into the machine. This allows the technician to carry out a full diagnostic test on the machine while still on site. There is an on-screen display which highlights the faults and origin of the breakdown. If required the MANITOU dealer can also assist by telephone.

Integrated Maintenance

Maintenance operations are now solved more quickly and easily.



Simple starting operation

A pre-heating system assists the starting of the machine.

Easy access to engine compartment

Robustness



Protected control panel

To overcome difficult working conditions, the basket control panel is protected by a heavy duty sliding cover.

This cover gives protection from numerous applications like painting, demolition, high pressure cleaning etc.

Also the cover will provide protection while the machine is stored overnight.

Rigid articulation structure

The reinforced arm structure increases the stability of the machine and increases the operators comfort while working.



More robust basket rotation

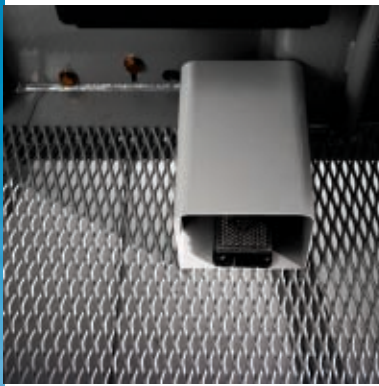
The rotation of the basket has been made more robust and reliable due the fitting of a new basket rotation motor.

RELIABILITY

Safety

Conforming to European directives,
your machine will be equipped
with all the necessary safety systems.





Dead man's pedal

For safety, all the platform operations from the basket require the use of the dead man's pedal. To avoid any objects being placed accidentally upon the dead man's pedal it is protected by a cover.

Safety valves on lifting rams

There are safety valves on all hydraulic rams in the articulated arms.

Two control panel

For added safety the lower control panel can override the basket control panel. However the emergency stop button can be deployed to avoid any accidents.



Overload protection

If the safe working load is exceeded, a hidden detector will block any upward movement.



Tilt detector

As soon as a machine exceeds a 9% tilt, the tilt detector will stop all aggravating movements.

Negative braking system

For complete safety, the braking system has to be released before any movements can be made.

Electrical emergency lowering pump

This feature allows the platform to descend in case of operator illness or machine malfunction.



Puncture proof, foam-filled tyres



SAFETY

Working in comfort

Due to our increased attention to these safety issues, improvements have been made to the comfort of the operators' working environment.



User friendly control panel

A simple design and spacious layout enables the operator to work in comfort.

Spacious basket

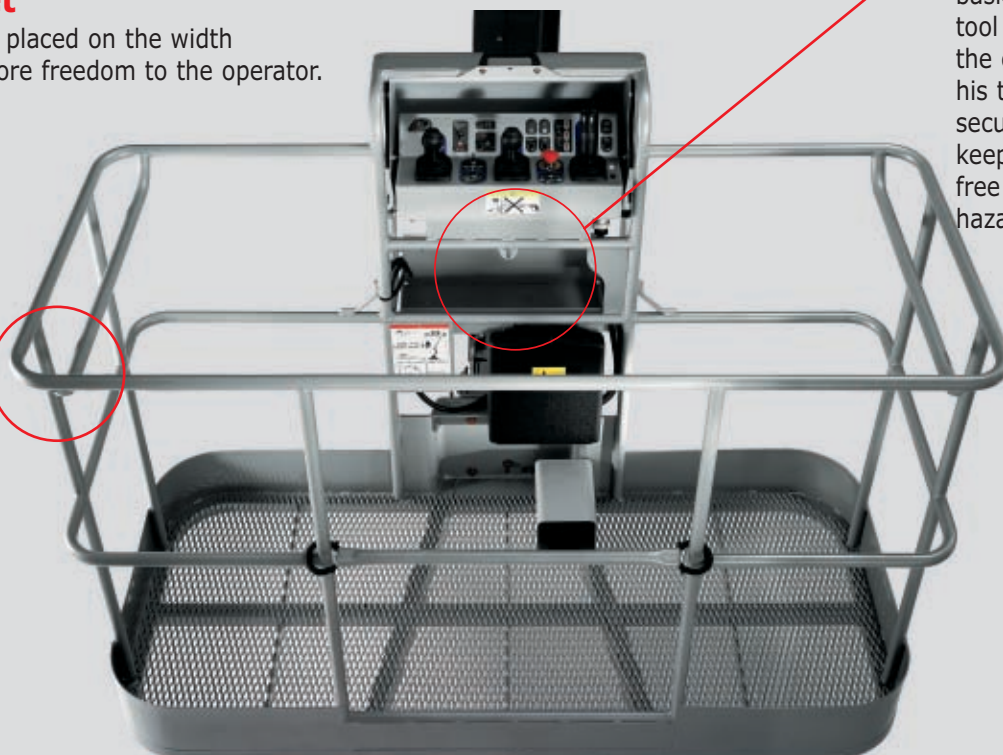
The emphasis has been placed on the width of the basket to give more freedom to the operator.

Twin handrails

Twin handrails fitted to give additional protection to the operator.

Tool tray

For practical needs the basket is fitted with a tool tray, this allows the operator to keep his tools safe and secure, plus he can keep his working area free from trips and hazards.



Choice of working speeds to suit the operator's experience

A choice of three working speeds can be selected depending on the experience of the operator.



Basket with better visibility

In order to work as safely as possible at height, the basket is fitted with a mesh floor, which increases safety when lowering the machine.

Stability of the machine

Thanks to the rigidity of the chassis and structure, the operator can work safely and in comfort.

SAFETY





Manitou, material handling world leader

Inventor of the rough terrain forklift truck, Manitou offers today the most comprehensive range to meet all specific handling and personal lifting requirements :



Telescopic trucks

MANISCOPIC

Rough terrain and semi industrial mast trucks

MANITOU



Access equipment

MANIACCESS

Compact telescopic handler

Twisco



Truck mounted forklifts

MANITRANSIT

Backhoe/Loader with telescopic boom

MANIHOE

Swinging arm and articulated wheeled loaders

MANILOADER



Electric pallet trucks and electric stackers

MANILEC



A network of skilled professionals at your service

With a network of 500 service and parts centres in more than 100 countries, Manitou provides an efficient after-sales support based on the expertise of 2000 factory trained technicians.

This publication in no way constitutes an offer and the company reserves the right to alter specification without prior notice.
The MANITOU models presented in this brochure can be supplied complete with optional equipment attachments.

MANITOU BF SA

B.P. 249 - 44158 Ancenis Cedex - France
Tél. : 33 2 40 09 10 11 / Export Department Fax : 33 2 40 09 10 97
www.manitou.com

700295EN

